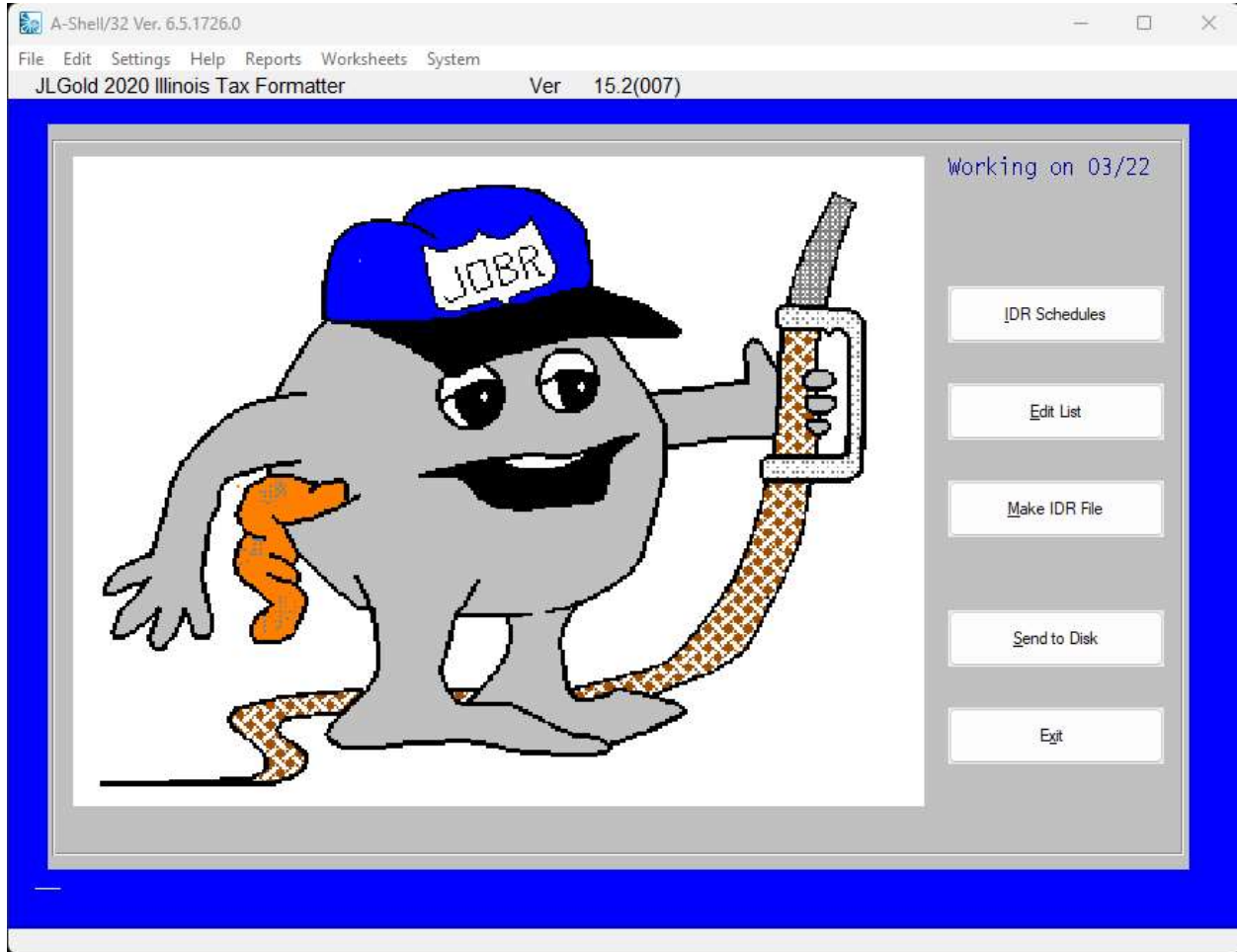


Birmingham Data Systems II LLC

PO Box 71062

Rochester Hills, MI 48307

(248) 528-0250



The Tax Form Lines option is used to enter all transactions for the IDR Tax Schedules. The Enter Tax Form Lines screen shown above displays the entry fields and related choices for all of the IDR fuel tax schedules. This screen is reached from the JLGold Main Options menu by taking choice

Enter IDR Schedules

Your screen first will display the message:

Enter the tax reporting period (MMYY)

A-Shell/32 Ver. 6.5.1726.0

File Edit Settings Help

Enter Tax Form Lines BIRMINGHAM DATA SYSTEMSII 15.2(001)

DEC 2022	JAN 2023	FEB 2023	MAR 2023	APR 2023
MAY 2023	JUN 2023	JUL 2023	AUG 2023	SEP 2023
OCT 2023	NOV 2023			

Select the tax reporting period 0322

OK EXIT

At this cursor, you enter the month (MM) and year (YY) of the tax reporting period you wish to process for electronic transfer to IDR.

Before choosing the Enter IDR Schedules option, you should assemble all of the invoices and related information for the desired tax reporting period.

It need not be assembled in any special order. Use an order convenient to your regular business practice. Tax form line entries need not be made all at once for a reporting period. You may do this operation daily, weekly, monthly, or as you feel like it as long as you are careful to be accurate on specifying the tax reporting period date. The JLGold system is designed to store and organize the information.

A-Shell/32 Ver. 6.5.1726.0

File Edit Settings Help

Enter Tax Form Lines BIRMINGHAM DATA SYSTEMSII 15.2(001)

1 Schedule	A	9 Entry Type	0
Your Lic #	01-04321		
2 Inv Date		10 Carrier	
3 Inv Number		11 BOL Number	
4 Seller		12 BOL Date	
License #	-	13 Origin City	
		14 Origin State	
5 Product Code			
6 Gallons	0	Tax Free	3
		Rec Type	1
7 Dest City			
8 Dest State			

SAVE QUIT

Use the UP ARROW to change the schedule type.

Working on 03/23

Afterwards you can print Edit List and Schedules and Make IDR file to transmit to IL-DOR My Tax website.